

**DP20**



# DESKTOP SMART FAST CHARGER

## User Manual

---


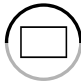








## ▶ Operation guide on DP20 desktop smart fast charger

Product Features	01	▶
Structures Instruction	01-02	▶
Product Parameters	03-04	▶
Operation Steps	05-10	▶
Precautions	11	▶
After-Sales Service	12	▶

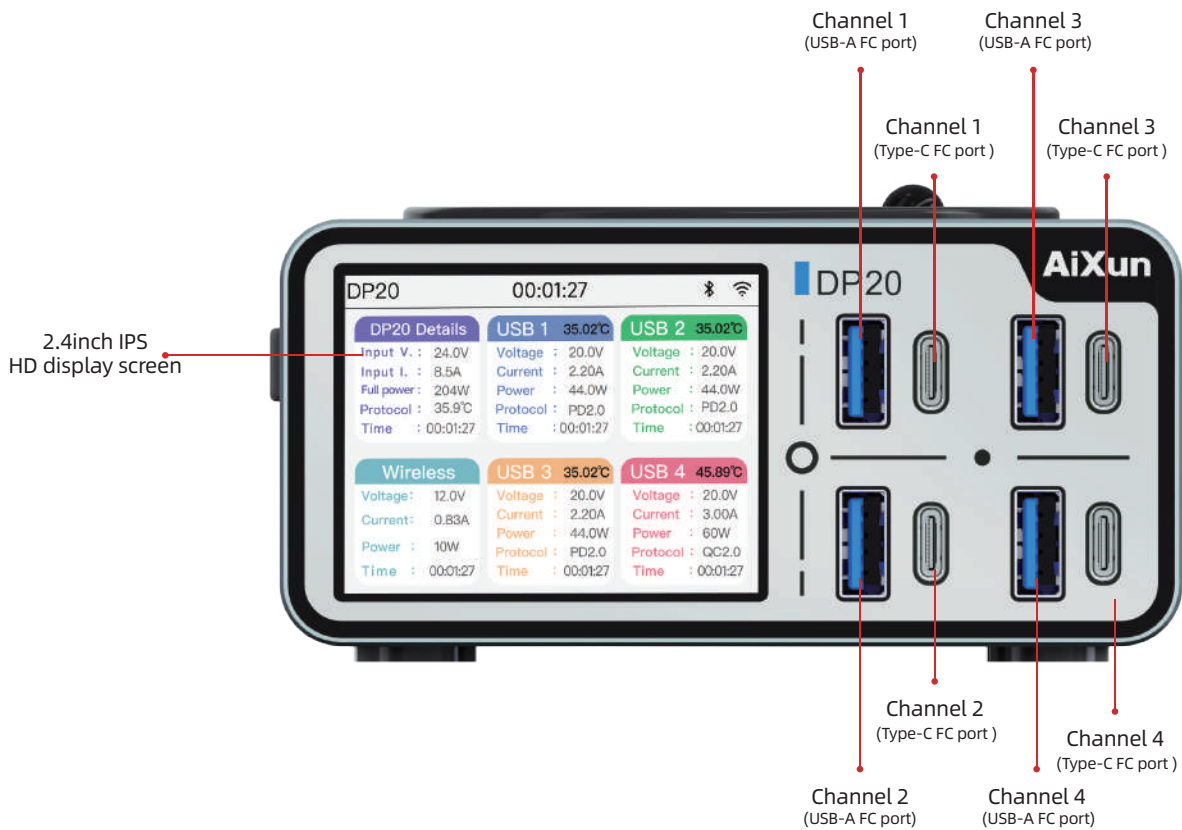
# Product Features ▶

## ▶ Functions Display

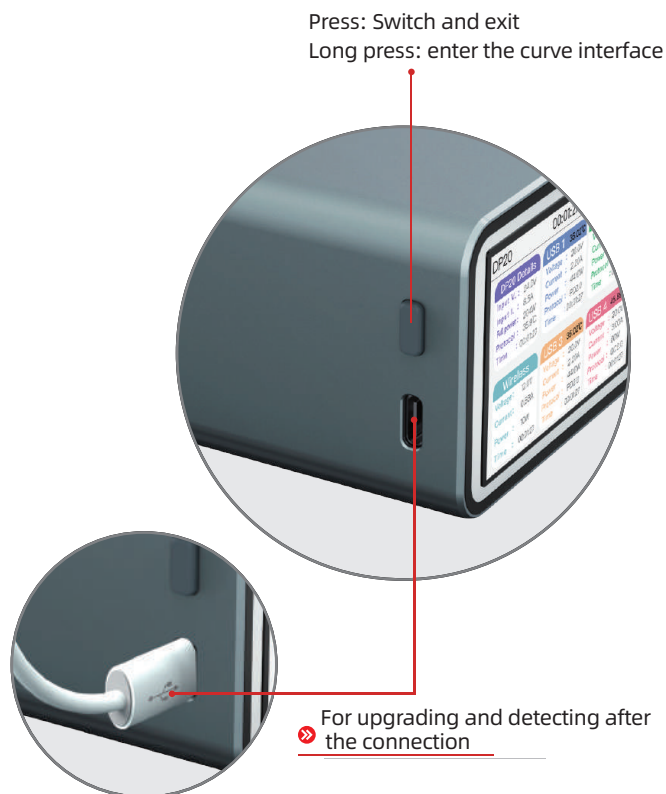
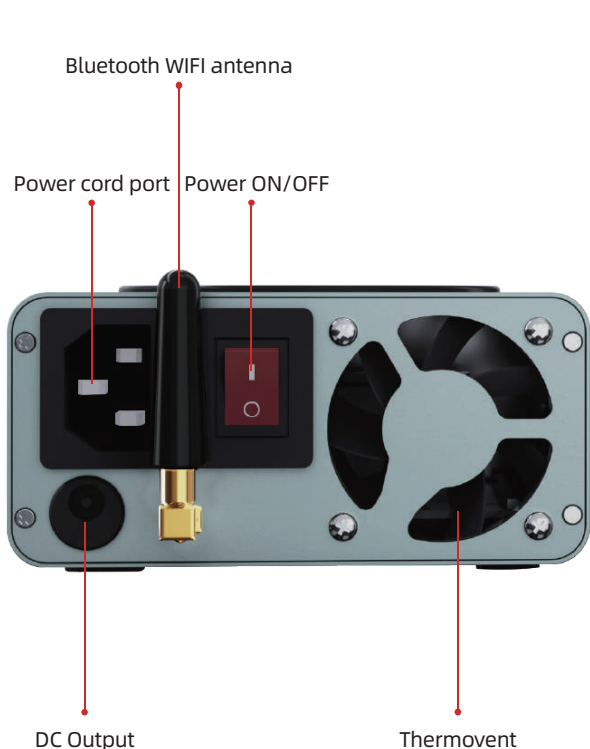
-  **100-240V AC**  
Wide range voltage input
-  **2.4inch IPS**  
HD display screen
-  **WIFI networking/OTA upgrade**  
Bluetooth interconnection
-  **Wireless charging**  
Max power 15W
-  **200W full power**
-  **4+4+1+1**  
Multiple fast charging ports
-  **Support multiple fast charging protocols**  
PD3.0/QC4.0/SCP/PE2.0 etc
-  **Curve detection**  
Current and voltage, data analysis

# Structures Instruction ▶▶

## ▶ Front side



► **Back side**



► **Packing list**



## Product Parameters >>>

### Basic parameters

Name: Desktop smart fast charger	Communications: Bluetooth WIFI/Cable	Display screen size: 2.4inch IPS (320*240)
Input voltage: 100-240V AC (60Hz/50Hz)	Output current: 0-8A	Fast charge protocols: PD3.0/QC4.0 SCP
Fast charge voltage: Tiered 5V/9V/12V/15V/20V	Fast charge current: 0-2.2/3A	Max fast charge power: 44W of channel 1-2-3 / 60W of channel 4
Max output power: 200W	Fast charge power: 5-15W	DC output: 24V 8A
Host dimensions:111*148 *52mm	Net weight/kg: 0.67	Acquisition accuracy: Front panel 10mA, DC port is not collected

\*Above data is provided by AiXun lab, please refer to the actual data!

### Main functional parameters

4+4+1+1 multiple fast charging ports	
Support various fast charge protocols	Support PPS/PD3.0/PD2.0 Support QC4+/QC4/QC3.0/QC2.0 Support AFC Support SCP Support PE2.0/PE1.1 Support SFCP Support direct charging under low voltage
Support 5-15W wireless charging	Most are 5V1.5A and 5V2A on the market, i.e. 7.5W and 10W, up to 15W
IPS HD large screen	Large angle of view, wide color gamut, high brightness contrast, lower glare and anti-flicker, fast response
Curve	Visualized data; real-time accurate monitor and output of voltage and current curves
Bluetooth WIFI	WIFI networking: firmware upgrade, remote maintenance, real time monitor, remote control, cooperative work with Cloud database and the device, Bluetooth interconnection
Wide range voltage input	100-240V AC (60Hz/50Hz)
Intelligent	Default to be in the standby mode and display the local time and weather, high interface refresh, adapt to the output statuses changes of multiple channels. Networking wireless upgrade, platform monitoring, exclusive Cloud database. The platform supports customized startup picture and 60W output interface

## ► General parameters

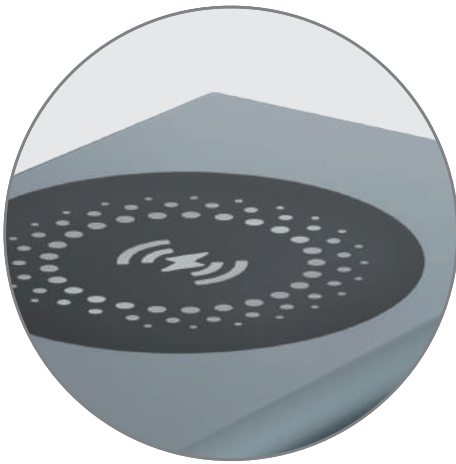
AiXun platform	Enhance human-computer interaction, remote control, current collection and comparison, and customize your device
Interface	Newly revised version, fresh and bright, improved ratio of content screen, self-adaptive to the charging status
Screen	2.4 inch IPS screen, resolution: 320*240, outstanding color expression
Strong power	44W power of channels 1-3/ 60W power of channel 4, wireless charging power 5-15W DC 24V/8A=192W (direct output of power supply, sampling without monitoring)

## ► Functional parameters of ports

Type-C fast charging port	Fast charging
USB-A fast charging port	Fast charging
Wireless charging	Fast charging
DC port	Direct current output
Button (upper left corner)	Press: switch the option and exit; long press to enter the digital display interface first, and then short press to switch to the curve interface
Type-C port	For upgrading and monitoring after the connection

# Product Operation ▶▶▶

## 1 Alloy shell Super anti-static isolation design ▶▶▶



Silicone pad for wireless charging



## 2 IPS HD display screen Redesigned interface, clearer and more delicate display effect ▶▶▶

Short press the button on the left to switch device

DP20 Details	USB 1 35.02°C	USB 2 35.02°C
Input V. : 24.0V	Voltage : 20.0V	Voltage : 20.0V
Input I. : 8.5A	Current : 2.20A	Current : 2.20A
Full power : 204W	Power : 44.0W	Power : 44.0W
Protocol : 35.9°C	Protocol : PD2.0	Protocol : PD2.0
Time : 00:01:27	Time : 00:01:27	Time : 00:01:27

Wireless	USB 3 35.02°C	USB 4 45.89°C
Voltage: 12.0V	Voltage : 20.0V	Voltage : 20.0V
Current: 0.83A	Current : 2.20A	Current : 3.00A
Power : 10W	Power : 44.0W	Power : 60W
Protocol : QC2.0	Protocol : PD2.0	Protocol : QC2.0
Time : 00:01:27	Time : 00:01:27	Time : 00:01:27

**3 4+1+1 HD fast charging port**  
Support multiple fast charging protocols ▶▶

- ▶▶ 44W power of single channel 1-2-3
- 60W power of single channel 4

200W max full charging power

**Self-adapting channel status display**

PD3.0/QC4.0/SCP/PE2.0, etc.



**4 Precise temp control** Auto temp control without hotting ▶▶

- ▶▶ Starting from 40°C, stopping until 38°C (constant in 38°C)

Good heat dissipation channel, reduce calorific value effectively, ensure the safety of mobile phone charging

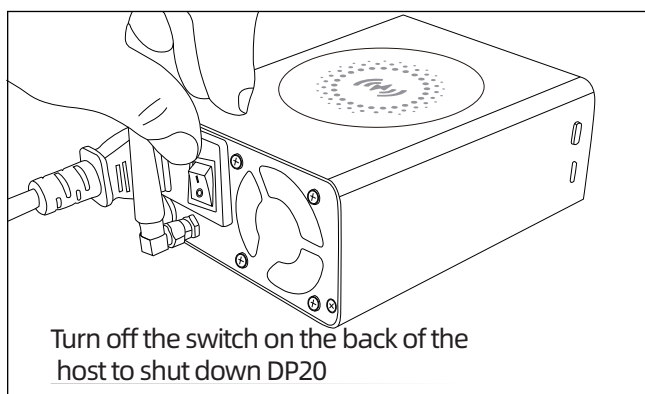
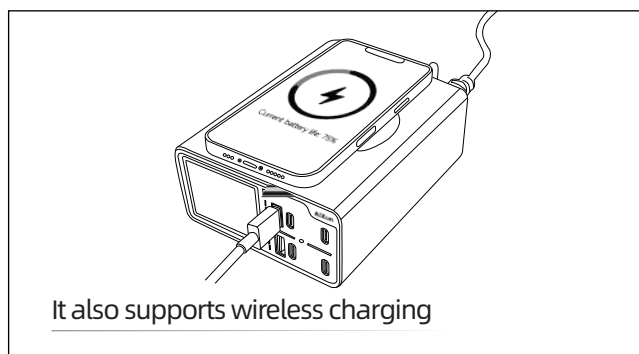
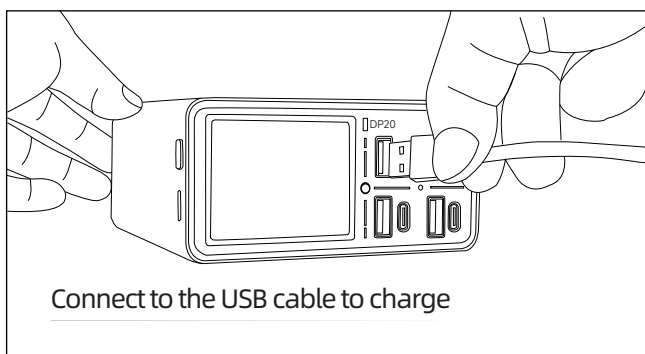
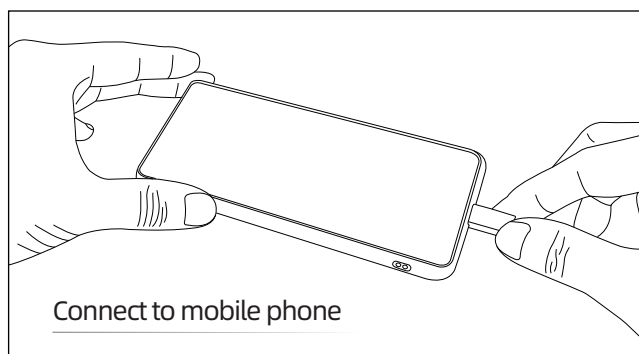
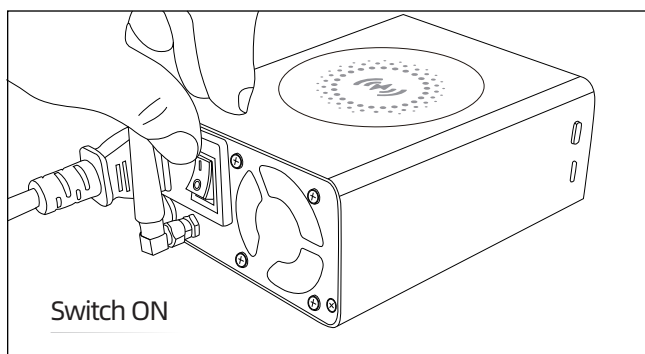
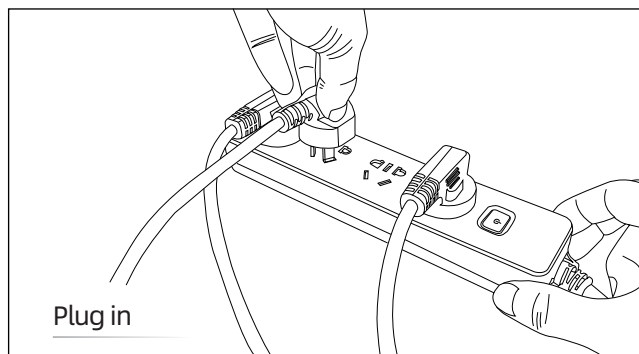
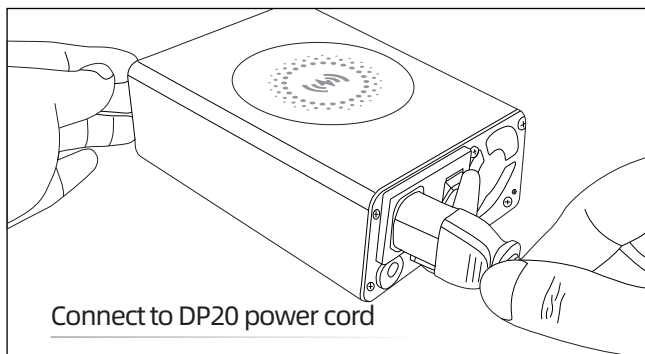




## 5 Wide range voltage Universal use in worldwide

Adapt to 100-240V AC supply voltage input ▶▶▶

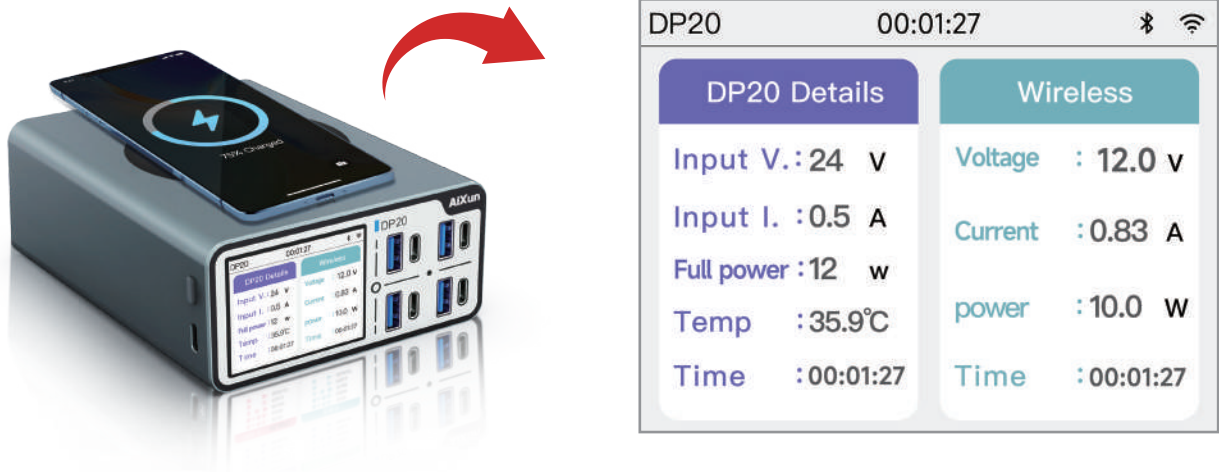
### »» Operation steps of charging



**6 Support wireless charging** Detect multiple devices in real time ▶▶

▶▶ **Support wireless charging on the top of DP20**

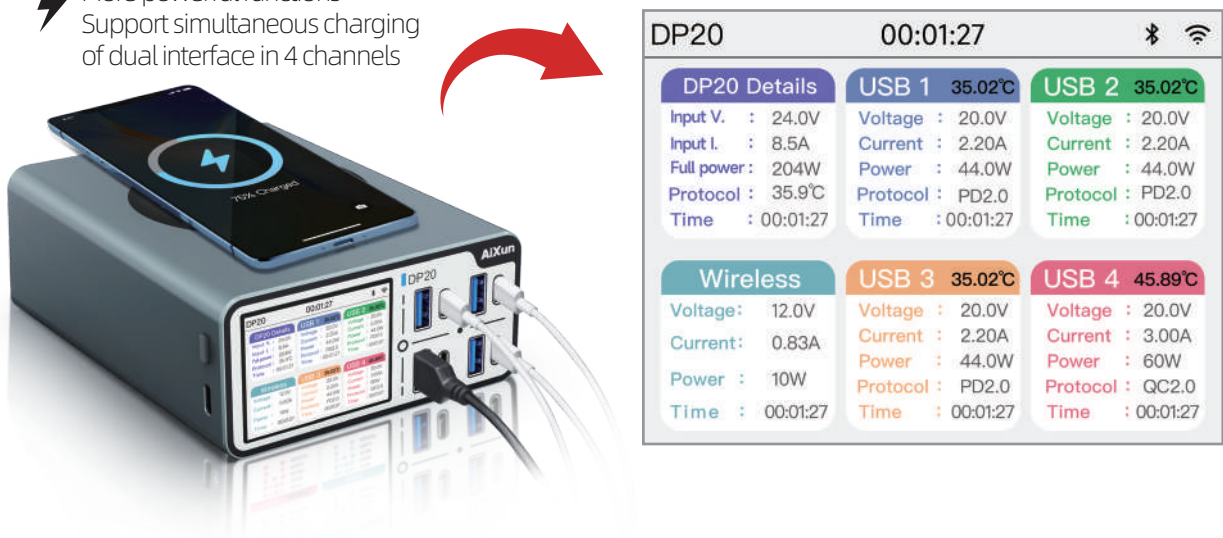
15W max wireless charging power, the charging data can be detected in real time



▶▶ **The screen can display the data of 5 devices and 1 host**

Support simultaneous output of Type-C/USB-A/wireless charging DC

⚡ More powerful functions  
Support simultaneous charging  
of dual interface in 4 channels



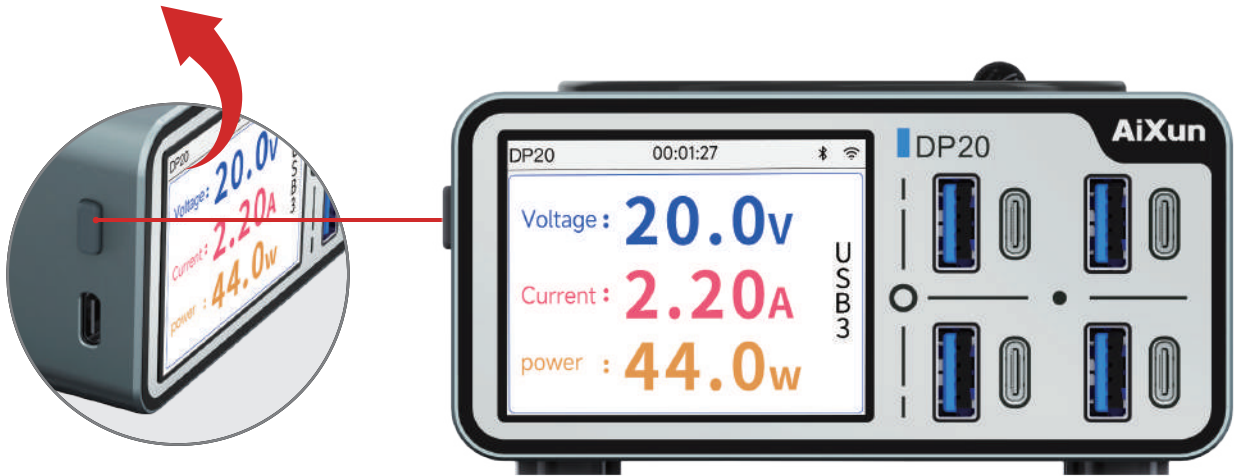


## 8 Curve detection Current and voltage Data analysis

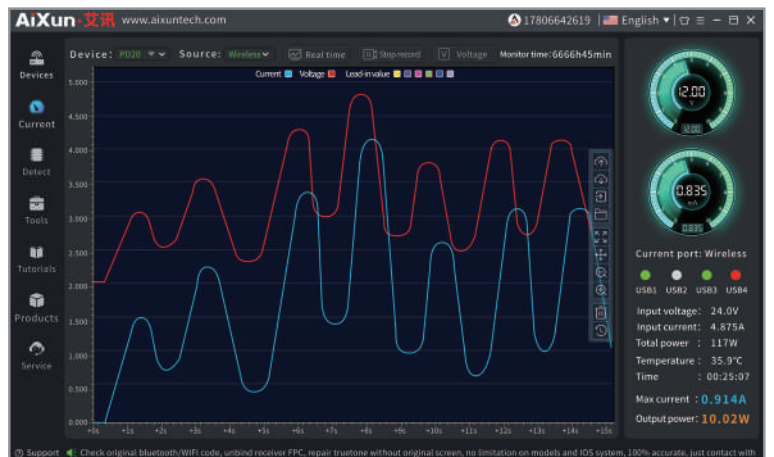
Transmit data/upgrade through Bluetooth WIFI ▶▶▶

- ▶▶ Select a channel in charging, long press to enter the digital interface, and then short press to switch to the curve interface

Connect with AiXun platform through Type-C USB cable or wireless, analyze data more clearly on PC!



## ▶▶ Charging current curve detection



## Precautions ▶▶▶▶

### ▶ To avoid power supply damage and keep safe working environment, the following items should be observed:

- ▶▶ The product uses a three wire grounding plug, which must be inserted in a three hole grounding socket. Do not change the plug or use an ungrounded three plug adaptor to avoid poor grounding. To lengthen the wire, please use a grounded three wire power cord
- ▶▶ Built-in precision electronics, non-professionals please do not disassemble without authorization.
- ▶▶ Please adjust strictly according to the official parameters.  
Do not exceed the value range to prevent product damage and malfunction.
- ▶▶ Please adjust strictly according to the official parameters. Do not exceed the value range to prevent product damage and malfunction.  
Do not reverse the connection, otherwise it will cause a short circuit.
- ▶▶ Please do not mix metal flakes and wire debris into this product.  
Otherwise it may cause electric shock, fire, or failure.
- ▶▶ Replace fittings with original accessories.
- ▶▶ If it is in idle for a long time, please place it in a dry environment.
- ▶▶ Do not wet the power supply, and do not use it nor pull the power cord with wet hands.
- ▶▶ Please strictly follow this manual when using.



## Warning

This product has anti-static measures, please be sure to use grounding.

---

## After Sales Service ▶▶▶▶▶

---

### ▶ Warranty regulations:

- ▶▶ The product is guaranteed for one year from the date of purchase (subject to the purchase certificate).
  - ▶▶ The warranty service is only valid under normal use. All man-made damage, such as improper use of accessories, failure to use according to instructions, damage not caused by our company's repair, wrong use or negligence, the warranty service will immediately be invalid.
  - ▶▶ The company has the final right to interpret the above regulations for users who do not comply with the above regulations.
-

# AiXun

---

**Address:** Room 402(403), Building 2, IOT Industrial Park, 4012 Wuhe Blvd,  
Bantian Street, Longgang District, Shenzhen

**Hotline:** (+86) 400-175-8688

**Official website:** [www.aixuntech.com](http://www.aixuntech.com)



Made in China